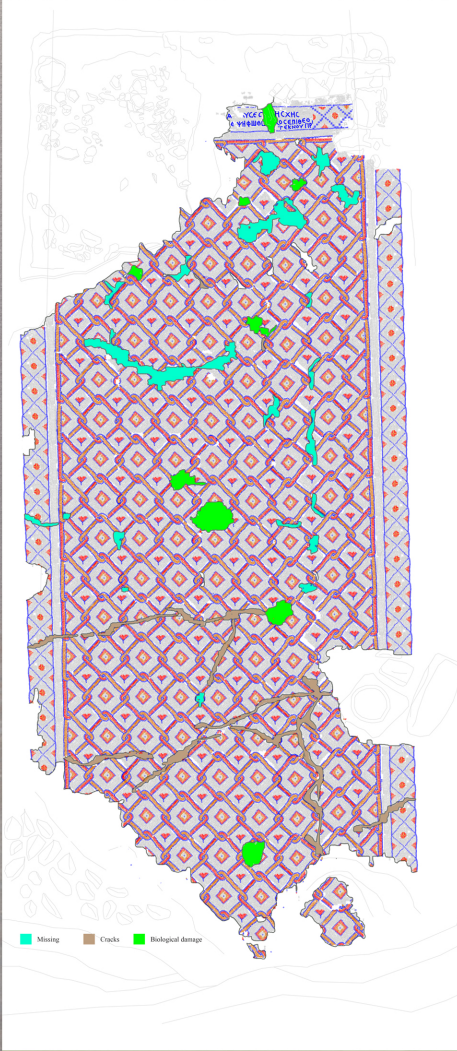




The Location

This site is located in the village of Al-Shabtiya in the northern part of the city of Latakia in Burj Salam region. This site is located at the top of 12 meters cliff above sea level and directly overlooking the sea.

It is a monastery dating back to the first Christian period, As result of the discovery of a large Baptismal font, and the translation of the written part of the mosaics



Mosaic Description

A floor with a Christian religious nature facility specifically (a church or a monastery or the like). Geometric mosaic D1, D2, D3, D4 with written part at the entrance of the hall and consists of traditional layers which are : (tessellatum) Stone cubes layer, (nucleus) an installation layer of lime, (rudus) a preparatory layer, then (statumen) the base layer that proves the mosaic

The damage on mosaic was assessed by the competent team of restoration, and the kinds of damage were : Biological damage caused by insects and plants D5, D6, D7, D8, D10, Structural damage which appeared in cracks between the cubes D9

conservation:

Because of the agricultural nature of the site, the spread of the roots under the mosaic and its location on the edge of the cliff caused cracks in it even during the excavation. It was necessary to be taken and transported to the laboratory in Damascus for restoration and conservation.



A translation of it, which is very incomplete is: "For the of the peace sake of Esheses, this mosaic was paved during the reign of Theotkenus the priest." Phid. Malatus Jaghnon

The Damages:



2-temporal covering:

until the completion of the excavation and documentation of the site

1-Documentation:

Condition assessment through a technical study to determine the mosaic layers and dimensions of cubes and colors and types of decoration and was documented through pictures and plans



3-Lefting:

conservate the mosaic by extracting it from the original mortar and transporting it to the mosaic laboratory in the city of Damascus. and a layer of fabric had been pasted on the surface of the cubes to save them during the extracting process .



4-Restoration:

After cleaning the background of the mosaic, cubes were re-installed with new mortar semellar to the original moter on the Aluminim Honeycomb panel. At the end the Lacunae was refilled with mortar.

