



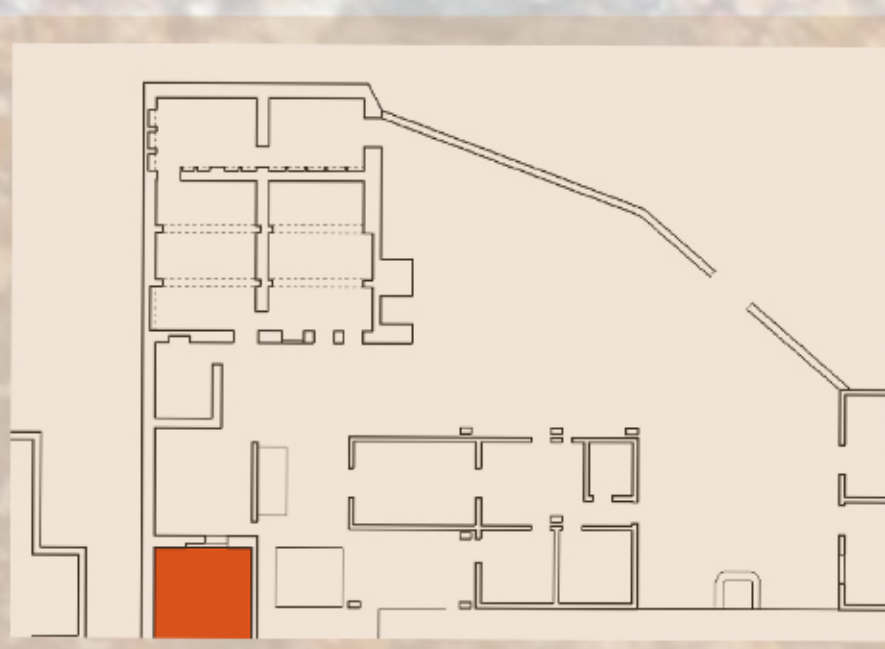
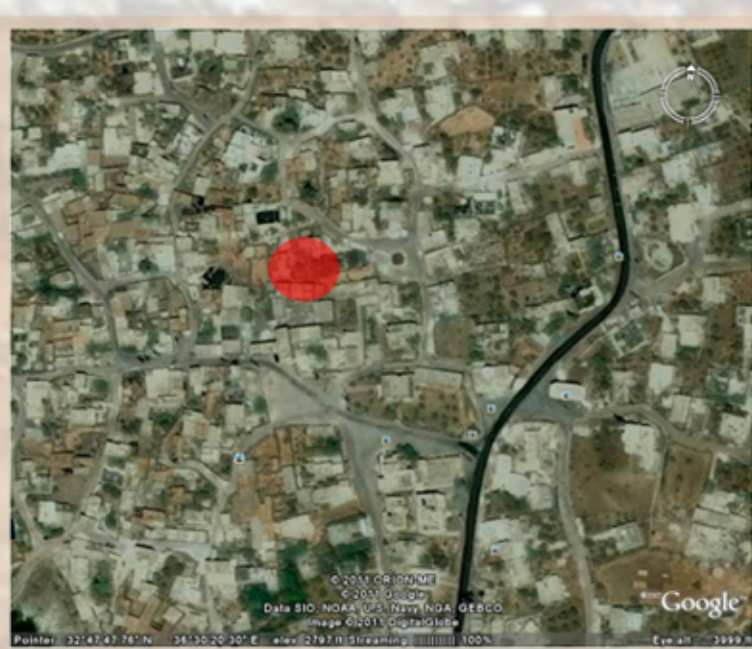
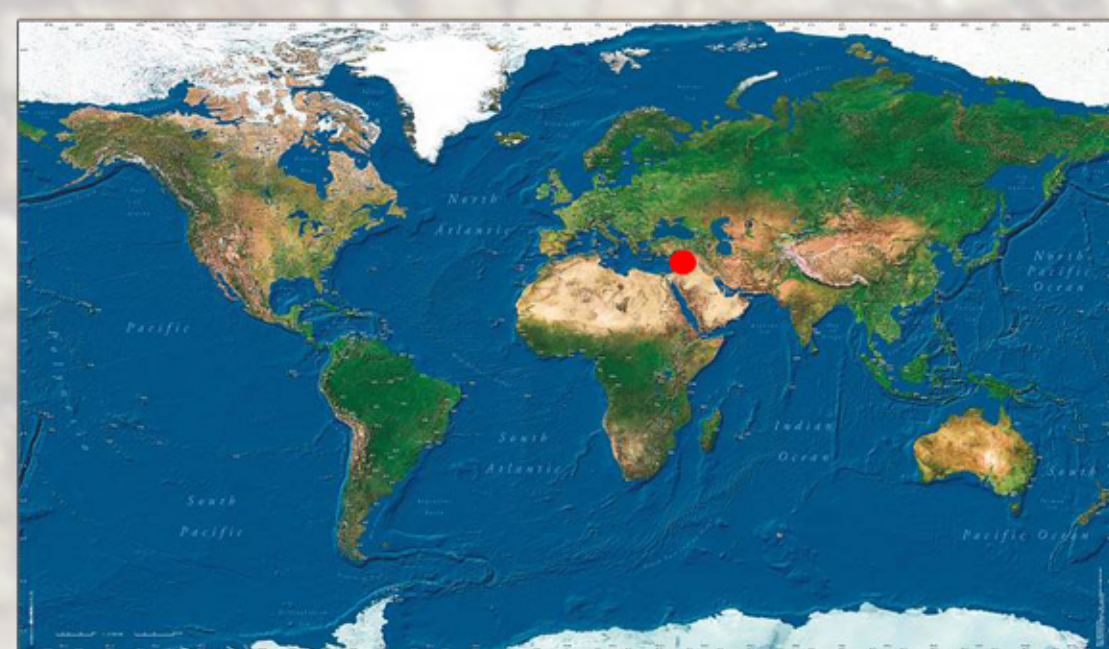
INTERNATIONAL COMMITTEE FOR THE
CONSERVATION OF MOSAICS

AL-MAJDAL MOSAIC

DOCUMENTATION, STUDING, URGENT-INTERVENTIONS, REBURIAL

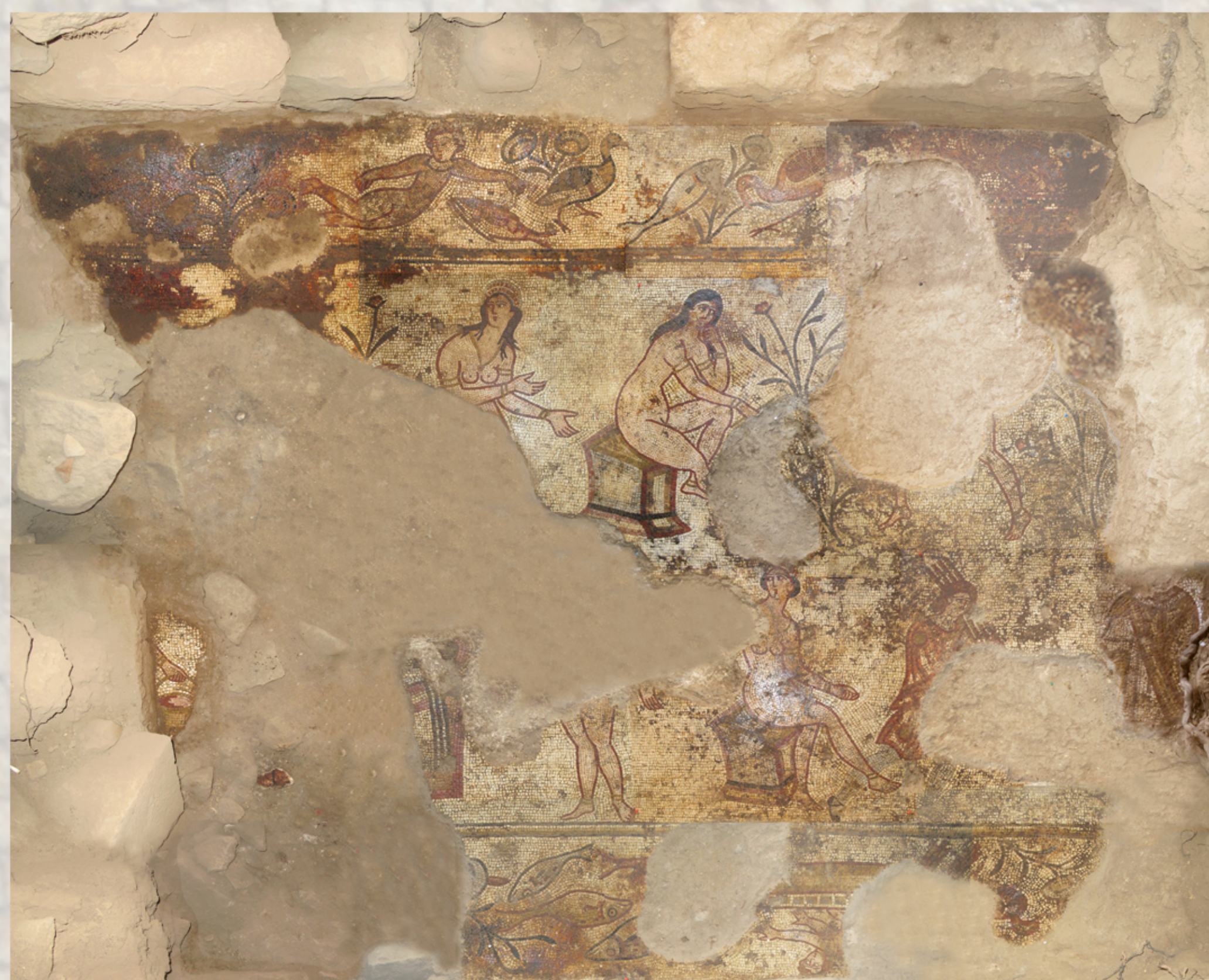


D.G.A.M SYRIA



ALMAJDAL IS ONE OF THE VILLAGES OF ALSWAIDA REGION, SITUATED 12KM TO THE WESTERN NORTH OF ALSWAIDA CITY AND IT HAS BEEN INHABITED DURING VARIOUS EPOCHS PARTICULARLY IN THE ROMAN AND BYZANTINE PERIODS WHERE IT HAS MANY TOWERS AND WELL PRESERVED BUILDINGS AND PONDS BELONGING TO THOSE

THIS PROPERTY IS COMPOSED OF AN ARCHAEOLOGICAL BASALT HOUSE CONTAINING TWO INHABITED ARCHAEOLOGICAL ARCHED ROOFED ROOMS AND A LONG STABLE BEHIND THEM, BELONGING TO THE ROMAN EPOCH AND IS CLOSE TO AN ARCHAEOLOGICAL COMPLEX WHICH CONSISTS OF ROMAN AND BYZANTINE BUILDINGS. THIS HOUSE HAS RECENTLY BEEN INHABITED AFTER ADDING MODERN ROOMS ON THE TWO ARCHAEOLOGICAL ROOMS AND IN THE SOUTHEAST OF THEM



MOSAIC INFORMATION

1-DATING THE MOSAIC

ACCORDING TO THE SWAIDA MUSEUM AND DESPITE THE UNFINISHED EXCAVATION IN THE PRIVATE PROPERTY TO THE WEST OF THE MOSAIC, THE MOSAIC COULD BE A PART OF ROMAN BATH , PURSUANT TO ITS SUBJECT (NAKED WOMEN) AND WATER CHANNEL WHICH HAS BEEN DISCOVERED NEAR THE MOSAIC COMING FROM A NEAR POND TO THE WEST OF IT .

IN ADDITION TO THIS ,WE CAN ALSO SAY THAT , THE USE OF SMALL TESSERAE SPECIALLY IN THE FACES AND ITS PRECISE PAVING IS ONE OF THE MOST IMPORTANT CHARACTERISTICS OF ROMAN MOSAICS

2-DIMENSIONS OF THE MOSAIC

THE CURRENT CLEAR DIMENSIONS OF THE MOSAIC ARE : 375 × 330 CM

3- TYPE OF THE MOSAIC

PAVEMENT MOSAIC

4- TYPE OF DECORATION

FLUVIAL - ANIMAL - HUMAN - BOTANICAL

5- SIZE OF TESSERAE

5 - 10 MM

6- MATERIALS OF TESSERAE

LIME STONE - MARBLE - RED BRICK

7- COLORS OF TESSERAE

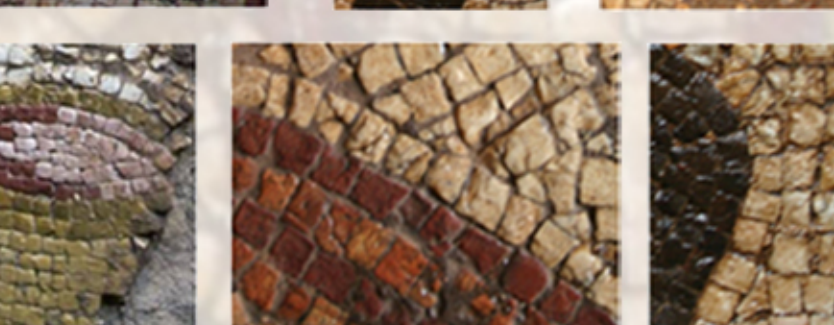
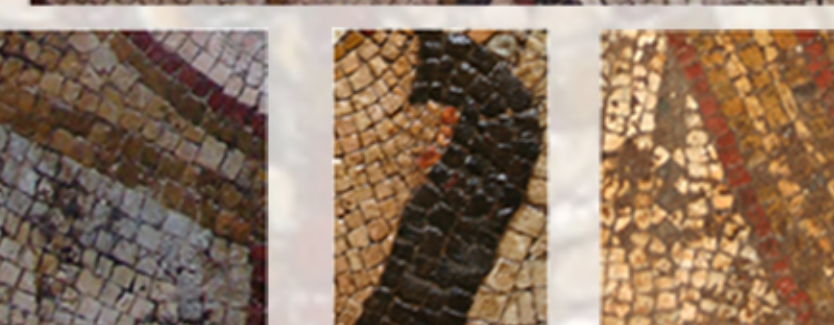
WHITE - BLACK - YELLOW - RED - ROSE - KHAKI - GRAY - CORAL

8- PAVEMENT TYPOLOGY

OPUS TESSELLATUM

9- MOSAIC STRATIGRAPHY

- STATUMEN - NUCLEUS - BEDDING LAYER - TESSELLATUM

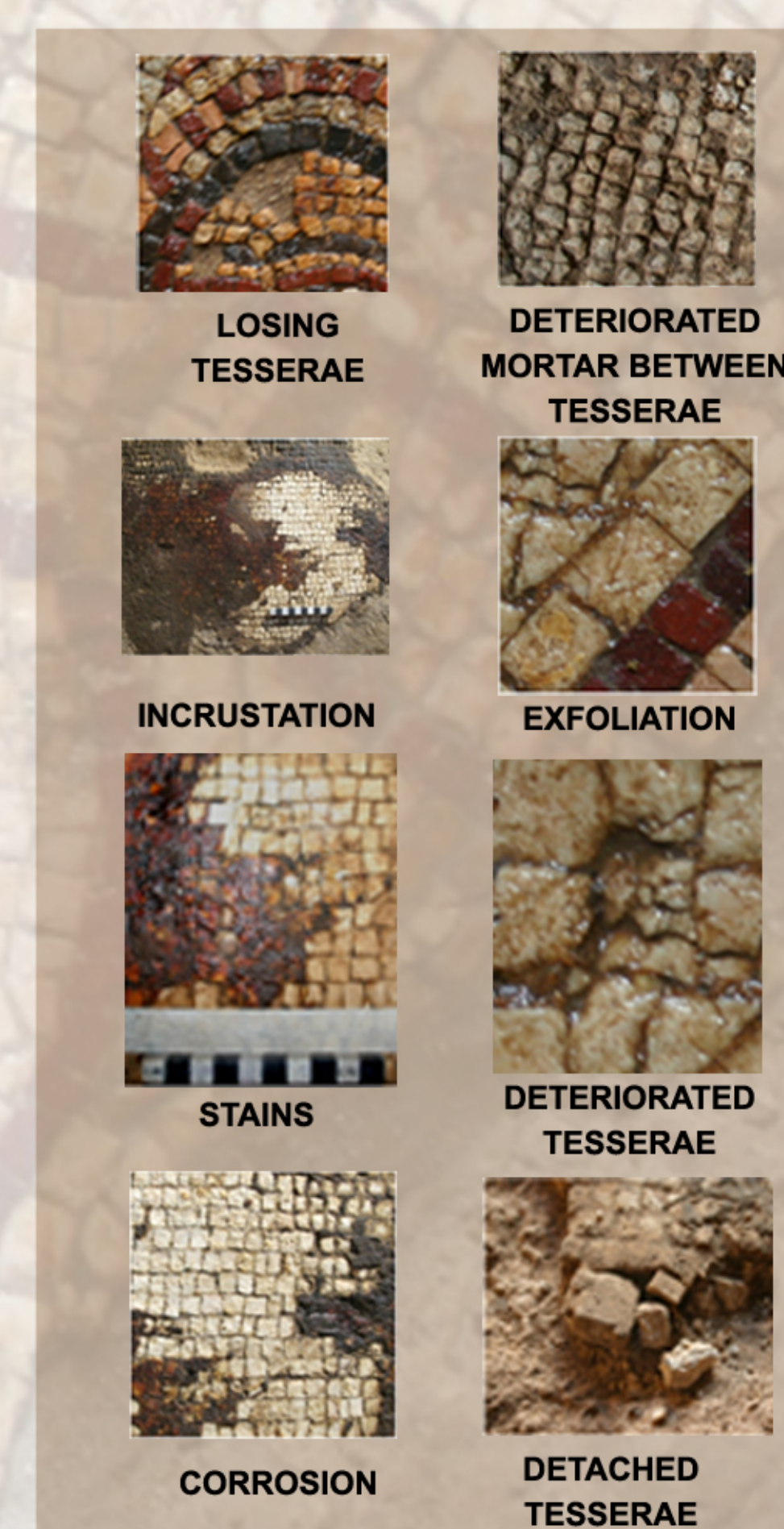
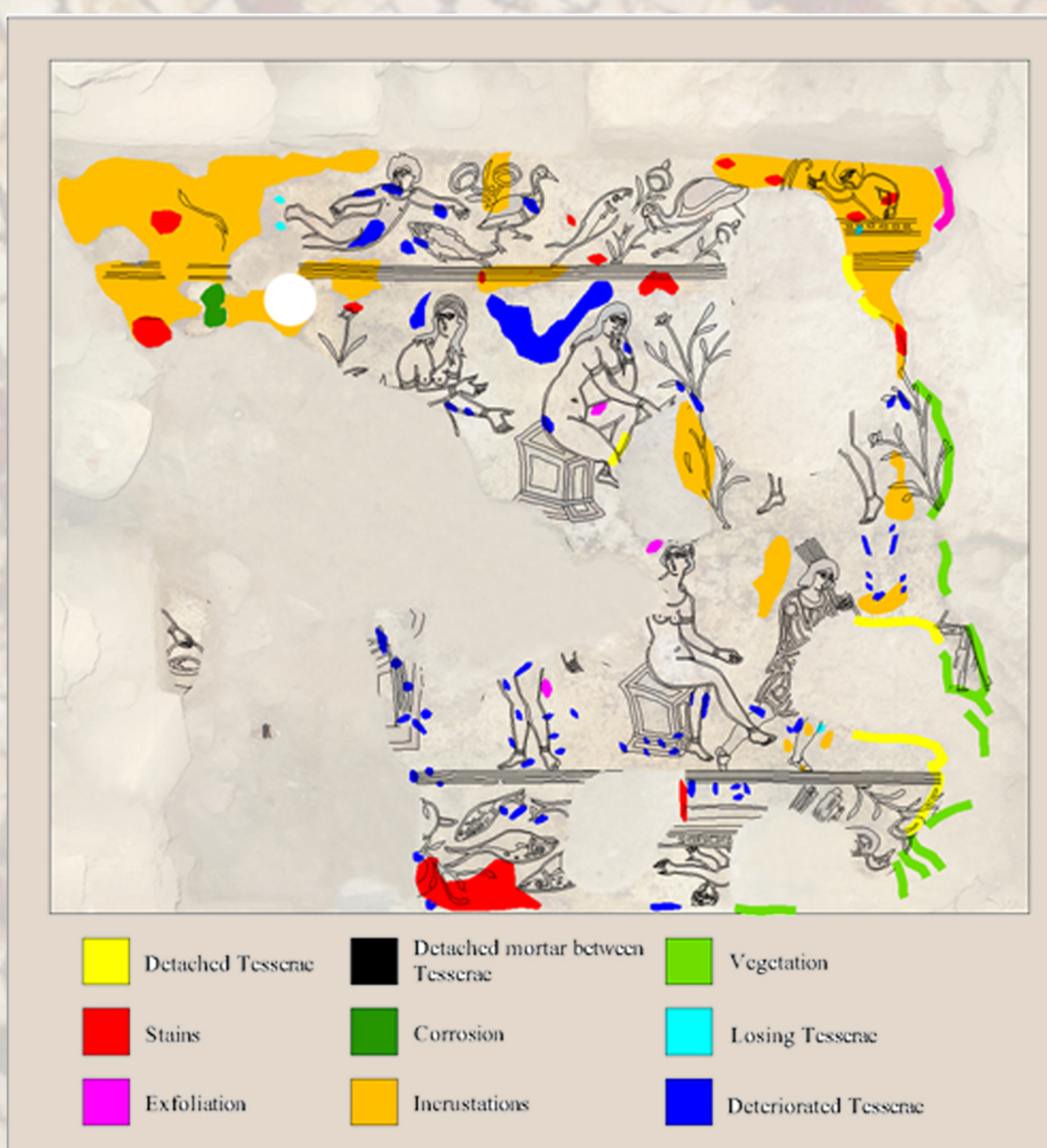
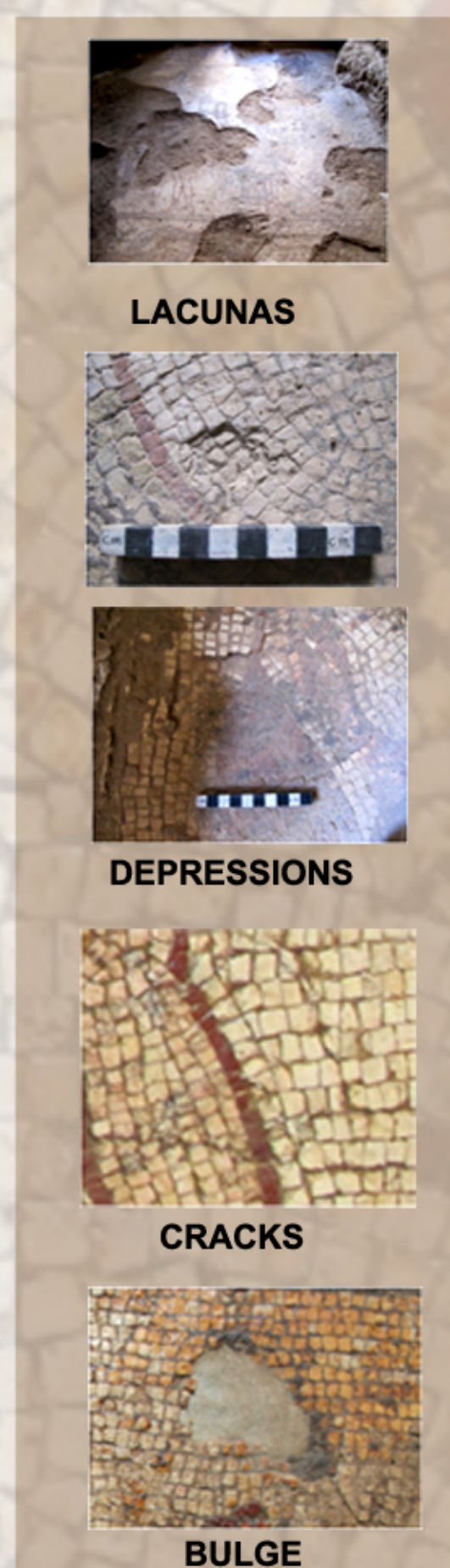
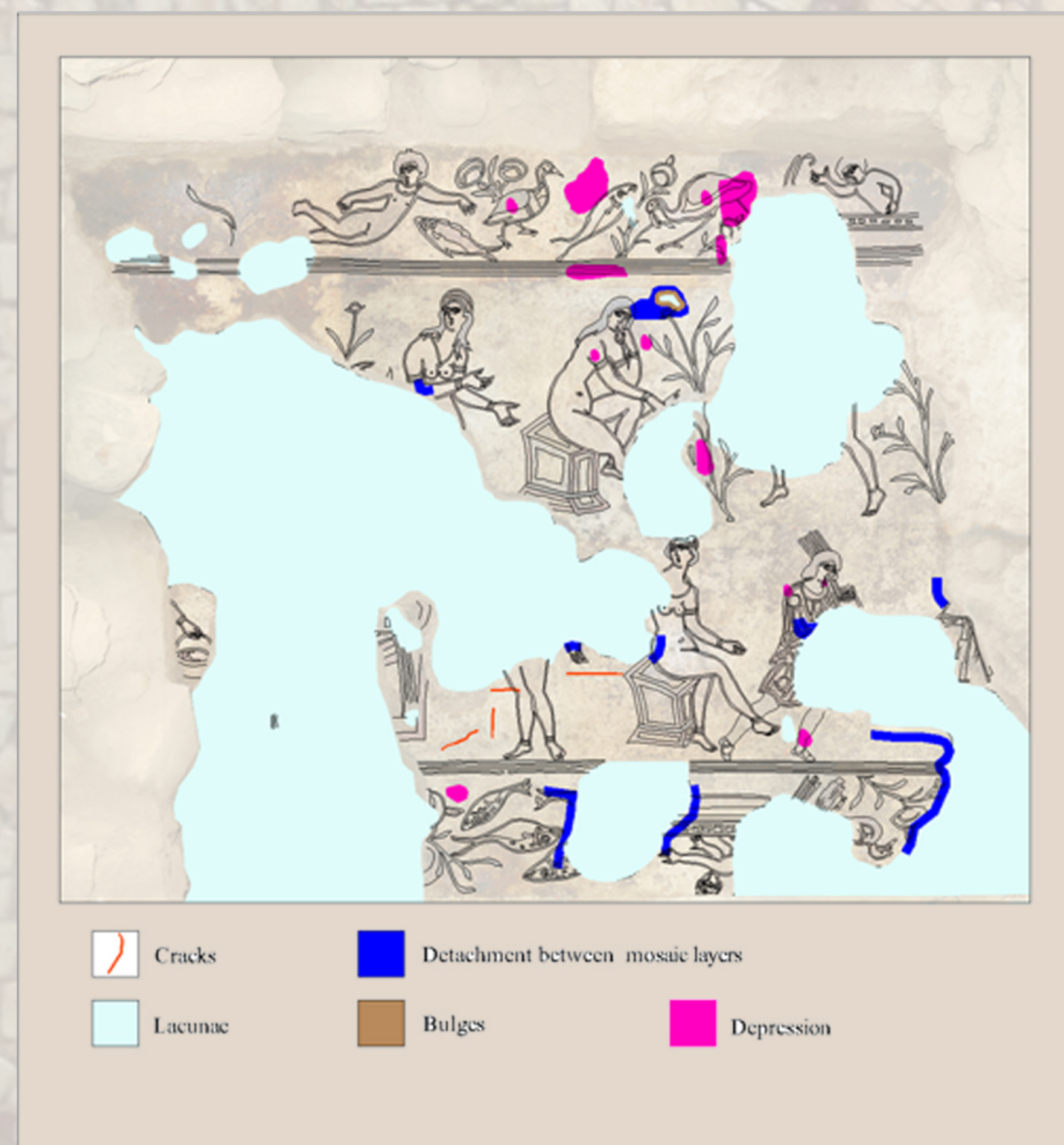


THE MOSAIC SUBJECT :

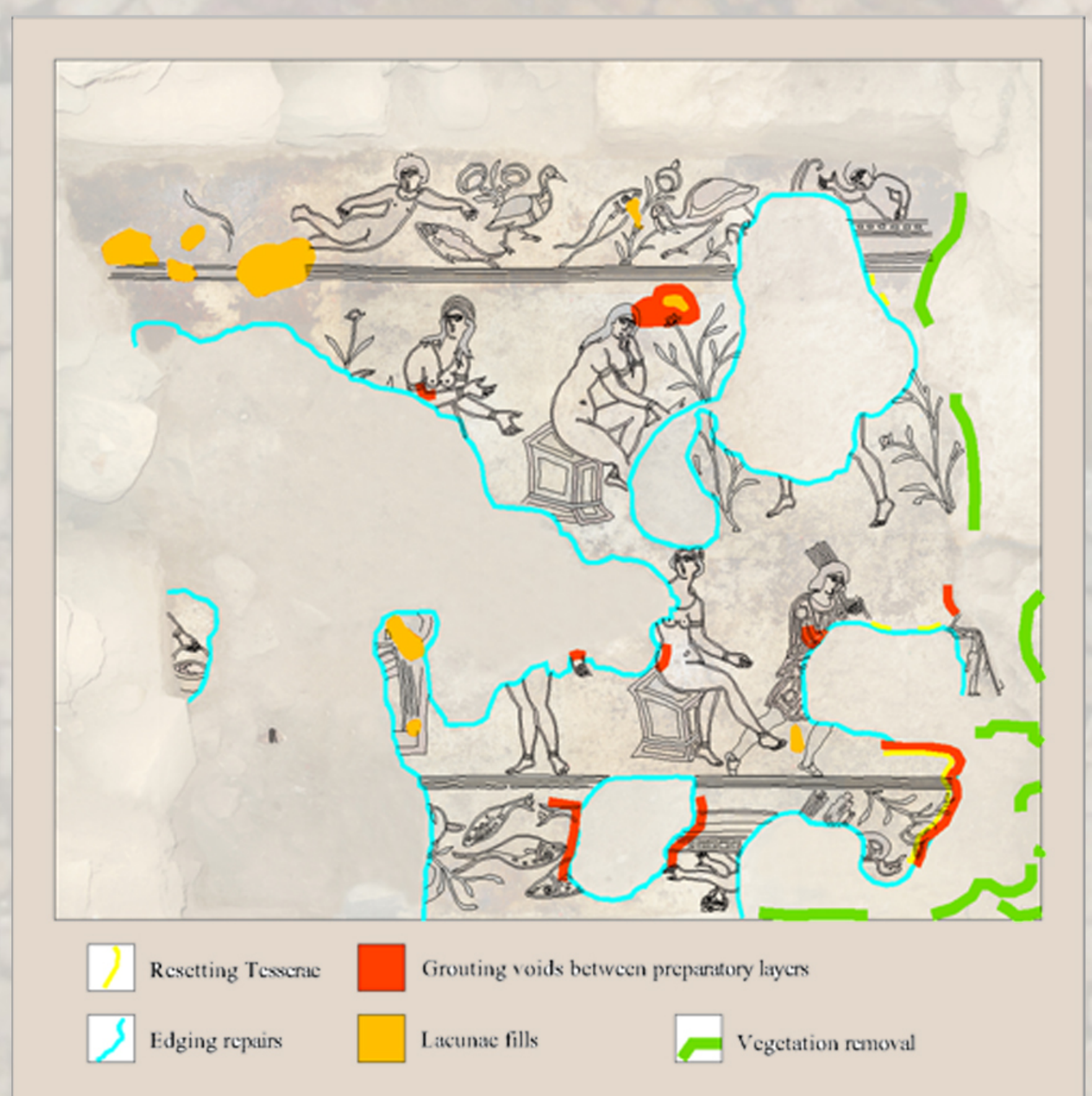
THE MAJOR SCENE OF THE MOSAIC REPRESENTS MORE THAN SIX NUDE WOMEN ORNAMENTED WITH ANKLETS, BRACELETS AND NECKLACES, TWO OF THESE WOMEN ARE SITTING ON A STOOLS AND THE OTHERS ARE STANDING, BESIDE ONE OF THE SITTING WOMAN THERE ARE TWO MEN (THE HUNTER AND HIS SERVANT WHO IS CARRYING SOMETHING ON HIS LEFT SHOULDER).

THE SCENE IS FRAMED TO THE NORTH AND SOUTH, EVERY FRAME REACHES 50CM WIDTH AND IS SEPARATED OF THE MAIN SUBJECT BY A BAND OF FIVE ROWS OF TESSERAE.

THE NORTHERN FRAME REPRESENTS A FLUVIAL SCENE WHERE WE SEE A BOY SWIMMING AND WEARING A NECKLACE WITH ON HIS LEFT TWO FISHES, A DUCK, AND SEVERAL PLANTS AMONG THEM, THE SOUTH FRAME REPRESENTS A FLUVIAL SCENE CONTAINING WHAT REMAINS OF A BODY SEEMS TO BE FISHING ACCORDING TO THE MOVEMENT OF HIS HANDS AND TO THE SHAPE WHICH APPEARS UNDER HIM WHICH COULD BE A BOAT. IN THIS FLUVIAL SCENE, THERE ARE ALSO THREE FISHES, TWO PLANTS AND WHAT REMAINS OF A BIRD (ANTERIOR PART OF ITS BODY).



CURRENT INTERVENTION



REBURIAL

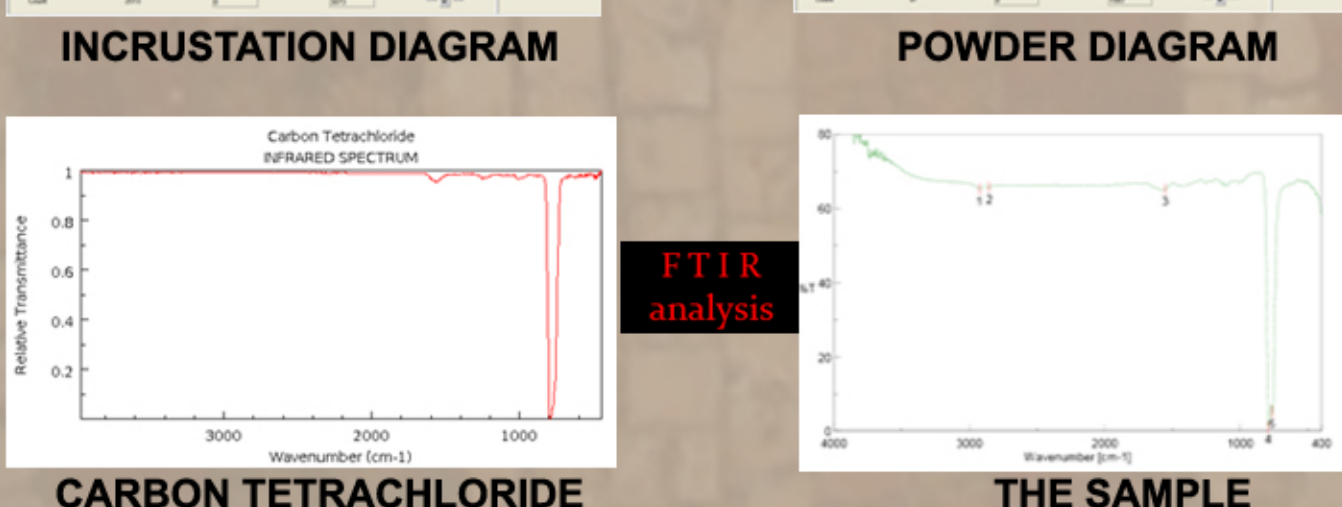
(BY SIEVED SAND AND EMPTY OF SALT AS A FIRST LAYER – NET AS A SECOND LAYER – SOIL AS A THIRD LAYER)



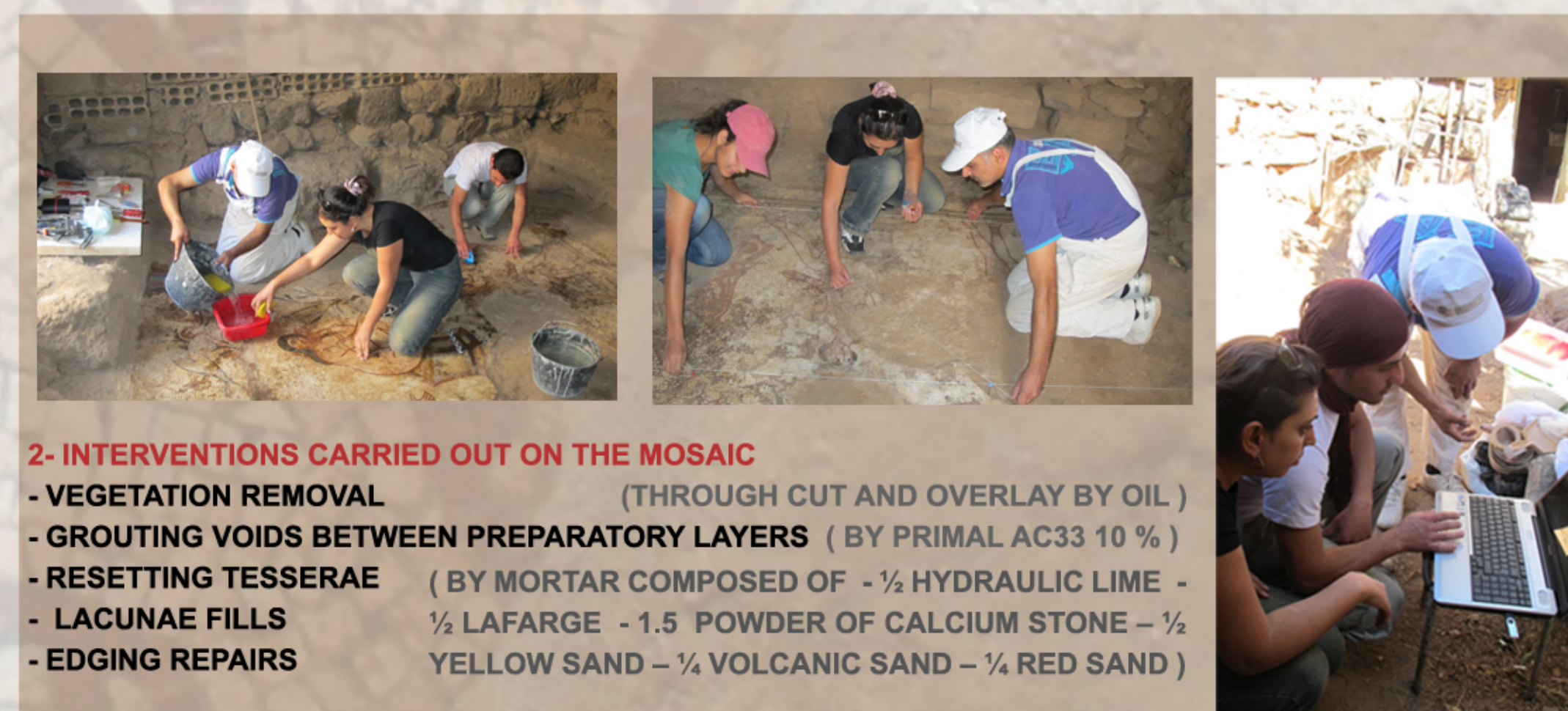
1- DOCUMENTATION



4- SAMPLE OF INCRUSTATION FOR ANALYSIS



THE INCRUSTATION HAS BEEN TREATED WITH SOLVENT OF CARBON TETRACHLORIDE TO SOLVE ANY ORGANIC MATERIALS, THEN AN INFRARED SPECTRUM ANALYSIS HAS DONE ON THE SAMPLE, THE RESULT WAS A COMPLETE IDENTIFY BETWEEN THE SPECTRUMS OF THE SAMPLE AND THE PURE CARBON TETRACHLORIDE, SO THE SAMPLE IS EMPTY OF ANY ORGANIC MATERIALS



THE SYRIAN TEAM
NESREEN BOUZA

ALAA HAMMOUD

MOHANNAD ALTAWHEEL

MAHER JBAEE

11TH CONFERENCE OF THE INTERNATIONAL COMMITTEE FOR THE CONSERVATION OF MOSAICS
VOLUBILIS, 24-27 OCTOBER 2011